

2019 여름
TruEdu영국영어캠프
안내서

우리 아이들이
더 행복한
여름방학



주관 UK & International Trade LTD

영어를 위한 영어 공부는 중요하지 않습니다.

TruEdu영국영어캠프에서는 문화와 사회성을 배우게 됩니다.

영국명문 사립학교에서 전세계 다양한 문화권의 학생들이 함께 배우는 문화와 사회성을 통해서 2주 뒤에는 우리 아이들의 마음 가짐이 달라지고, MINDSET이 달라집니다.

TruEdu영국영어캠프에서는 단순한 영어 공부가 아닌, 문화와 사회성을 스스로 터득하게 만들어 주고, 매순간 순간 우리 아이들이 행복감과 성취감을 느낄수 있게 만들어 줍니다.

TruEdu영국영어캠프 소개

캠프장소	영국명문 사립학교 & 전원 기숙사
캠프일정	아래의 기간 중에 선택, 총 2주간 진행 2019년 6월 30일 - 2019년 8월 21일
캠프대상	만 8세 (초등학교 2학년) - 만 17세
정원/마감예정일	캠프와 기간에 따라 약 20~30명 1차 마감일: 2월 말, 선착순 2차 마감일: 3월 말, 선착순
프로그램비용	약 300만원대 학교와 기간에 따라 다름 각 센터 혹은 담당자에게 문의
포함비용	현지에서 제공되는 영어수업, 교재비, 숙식비, 공항 픽업비, 영국문화체험 및 입장료, 교통비, 수수료, 여행자 보험
불포함사항	왕복 항공료, 비자 신청비, 개인 용돈
필요서류	여권, 신청서, 동의서

국제학생과 함께 하는 영어캠프

TruEdu영국영어캠프에서는 유럽 및 전세계에서 온 비슷한 연령의 참가생들과 함께 공부하고 생활하게 됩니다. 영국 명문사립학교에서 다양한 국적의 친구들과 함께 영국 영어도 배우고 재미있는 영국문화도 체험하면서 평생 잊지 못할 경험과 추억을 만들 수 있습니다.

한국인 선생님을 통한 밀착 케어

출국부터 귀국까지 한국인 선생님이 동반해서 학교 및 숙소 생활, 액티비티 활동에 도움을 줍니다. 아이들이 즐겁고 행복한 캠프가 될 수 있도록 각 학교들마다 TruEdu영국 영어캠프 직원들이 상주하여 학생들, 선생님들과 꾸준한 피드백을 주고 받으며 언어적, 정서적, 건강상의 어려움이 있을 경우 즉각적인 조치가 이루어집니다.

24시간 영어에 노출

오전, 오후, 저녁까지 알차게 구성된 프로그램으로 기숙사 생활까지 24시간 영어에 노출되는 일정입니다. 엄선된 영국 명문사립학교의 체계적이고 다양한 수업방식으로 살아있는 영국정통영어를 배우고 영국의 전통 있는 문화와 스포츠를 체험하며, 아이들이 흥미로워 할 다양한 저녁 프로그램이 운영됩니다.

프로그램



오전

영국명문 사립학교의 실력 있고 경험 많은 현지 선생님들의 정통 영국 영어 수업이 이루어집니다. 단기 과정에 특화된 강의 프로그램으로 언어의 네 가지 주요 기술인 듣기, 말하기, 읽기, 쓰기 실력 향상과 영어에 대한 자신감을 고취 시키는 것을 목표로 합니다. 유럽 및 전세계에서 온 다양한 국적의 학생들과 함께 수업을 받습니다. 첫날 레벨 테스트를 통해 학생 레벨에 맞는 반에 배정됩니다. 오전에는 말하기, 읽기, 쓰기, 듣기, 그리고 문법과 관련된 모든 핵심 기술 분야에서 영어 실력을 향상시키는 데 중점을 두고 수업이 진행됩니다. 체계적이고 다양한 수업방식으로 살아있는 영국정통영어를 배웁니다.



오후

전통 깊은 영국 문화와 스포츠를 배우고 체험할 수 있는 액티비티로 구성되어 있습니다. 오전 수업에서 학문적인 영어를 배운다면 오후 프로그램을 통해서도 다양한 액티비티를 통해 자연스럽게 듣기와 말하기 실력을 향상시킬 수 있습니다. 더불어 서로 다른 문화권의 친구들과의 만남의 기회를 통해 문화 이해의 폭을 넓힐 수 있고 외국 친구들을 만들 수 있는 기회를 제공합니다.



저녁

오후 액티비티와는 또 다른 공연예술 활동, 장기자랑, 가라오케, 디스코, 파자마파티, 영화 감상, 등 아이들이 재미있어 할 프로그램으로 구성되어 있습니다. 또래 친구들과 친해질 수 있는 기회를 제공하여 놀이를 통해 자연스러운 듣기와 말하기 기술을 향상시킬 수 있고 아이들이 다양한 국적의 참가자들과 자연스럽게 어울리며 친구들을 만들 수 있는 좋은 기회가 될 것입니다.

주말프로그램

주말에는 영국 관광 명소를 방문해 문화 체험이 진행됩니다.



- 첫째주 토 : 런던1차 여행,
- 첫째주 일 : 윈저에서 액티비티
- 둘째주 토 : 런던2차 여행,
- 둘째주 일 : 옥스포드 여행

주말 영국 문화 체험을 통해 진정한 영국을 만날 수 있습니다. 참가자들이 보고 듣고 느끼며 다양한 경험들을 하게 됩니다. 모든 프로그램은 한국인 선생님이 동행하며 안전을 최우선시 합니다.

세부일정 샘플

1주차		오전		오후		저녁	
MONDAY	Breakfast	Arrivals & Welcome Activities 도착 및 환영행사			Dinner	'Get to know you' Activities 자기소개	
TUESDAY		English Lesson 영어수업	Lunch	Sports Activities 스포츠 활동		Build our Friendship 친구맺기	
WEDNESDAY		English Lesson 영어수업		Sports Activities 스포츠 활동		Performing Arts Activities 공연예술활동	
THURSDAY		English Lesson 영어수업		Sports Activities 스포츠 활동		Performing Arts Activities 공연예술활동	
FRIDAY		English Lesson 영어수업		Sports Activities 스포츠 활동		Performing Arts Activities 공연예술활동	
SATURDAY		English Lesson & Activities Or Optional Full Day Trip				Show Me Your Talent 장기자랑	
SUNDAY		Full Day Trip 여행				Movie night 영화감상	
2-3주차		오전		오후		저녁	
MONDAY	Breakfast	English Lesson 영어수업	Lunch	Sports Activities 스포츠 활동	Dinner	Performing Arts Activities 공연예술활동	
TUESDAY		English Lesson 영어수업		Sports Activities 스포츠 활동		Performing Arts Activities 공연예술활동	
WEDNESDAY		English Lesson 영어수업		Sports Activities 스포츠 활동		Movie night 영화감상	
THURSDAY		English Lesson 영어수업		Sports Activities 스포츠 활동		Performing Arts Activities 공연예술활동	
FRIDAY		English Lesson 영어수업	Sports Activities 스포츠 활동	Performing Arts Activities 공연예술활동			
SATURDAY		English Lesson & Activities Or Optional Full Day Trip				Movie night 영화감상	
SUNDAY		Full Day Trip 여행				Farewell Party 송별회	
MONDAY		Completion Ceremony 수료식	Lunch	Departures 출발			

* 주말프로그램과 세부일정은 현지 학교 일정에 따라 달라질 수 있습니다.

출국 전 인솔자 동반출국

영국으로 출발하는 인천공항에서 부터 캠프 인솔자가 함께 출국을 진행합니다. 미리 배정 된 캠프 스텝들이 아이들의 수화물 수속부터 입국 및 세관 신고서 작성, 비행 컨디션 확인, 입국심사 통과까지 함께합니다.

엄선된 영국 명문 사립학교 & 기숙사 생활

엄선된 영국의 명문 사립학교 기숙사에서 본교학생들이 생활하는 것과 동일하게 생활하며, 기숙사 사감 선생님의 인솔 아래 보다 더 안전한 환경에서 생활하게 됩니다.

철저히 검증된 선생님 & 교직원 및 관계자

영국의 명문사립학교 여름 캠프는 검증된 선생님과 교직원 관계자로만 구성이 됩니다. 각종 범죄 연류사실 여부 확인 및 인성, 교양, 실력 모든 부분에서 철저히 검증이 된 분들로만 이루어져 있습니다.

부모님과 실시간 소통

단체톡방을 통해 실시간으로 업데이트되는 사진과 동영상을 보실수 있으며 그날그날 아이들이 캠프에서 생활하는 모습을 생생하게 확인할 수 있습니다. 또한 아이들의 건강상태 확인 및 캠프생활 관련 문의를 할 수 있습니다.

안전을 보장하는 명문 사립학교 기숙사

TruEdu영국영어캠프에 참가하는 참가자들은 엄선된 영국명문 사립학교의 기숙사에서 생활하게 됩니다. 학교 자체적으로 엄격하게 관리되는 만큼 다른 형태의 숙소들 보다 안전하고 쾌적한 환경에서 생활하게 됩니다.

영국명문사립학교 학생들이 생활하는 것과 동일하게 생활하며, 기숙사 사감 선생님의 인솔 아래 규칙적인 생활을 하게 되며, 보다 더 안전한 환경에서 생활하게 됩니다.

기숙사는 2층, 3층 도어락이 되어 있으며, 관계자 외엔 출입이 엄격히 통제가 되며, 24시간 교직원 대기 및 순찰, 양호실을 운영 합니다.



Frensham Heights School



- Frensham Heights School은 런던에서 서쪽 30분 거리에 위치해 있으며, 1925년에 설립되었습니다.
- 만 3~18세의 500명 정도의 학생이 재학 중입니다.
- 졸업생의 45% 정도가 A Level A+/A 를 받을 만큼의 아주 높은 학업 성취도와 진학 수준을 유지하는 명문사립학교입니다.
- A level 성적 기준 Top 클래스에 들어가는 명문사립학교입니다.

캠프 일정

2019년 7월 8일(월) ~ 2019년 7월 22일(월)
2019년 7월 22일(월) ~ 2019년 8월 5일(월)
2019년 8월 5일(월) ~ 2019년 8월 19일(월)

Cheltenham Ladies' College



- Cheltenham Ladies' College는 런던에서 서쪽으로 90분, 옥스포드에서 20분 거리에 있으며, 1853년 설립되었습니다.
- 만 11~18세의 850명 정도의 학생이 재학 중입니다. 졸업생의 약20%가 Oxford, Cambridge, 미국 아이비 리그와 Top명문대학으로 진학합니다.
- A level 성적기준 Top 40안에 들어가 있는 역사와 전통, 최고 수준의 교육과 학업성취도를 보유한 명문사립학교입니다.

캠프 일정

2019년 7월 10일(수) ~ 2019년 7월 24일(수)
2019년 7월 24일(수) ~ 2019년 8월 7일(수)
2019년 8월 7일(수) ~ 2019년 8월 21일(수)

Wycliffe College



- Wycliffe College는 런던에서 서쪽으로 90분 거리에 있으며 1882년 설립되었습니다.
- 만 2~18세의 420명 정도의 학생이 재학 중입니다.
- 졸업생의 92%가 Oxford, UCL, Imperial, LSE 등 영국의 Top 대학들로 진학하고, 60%가 A level에서 A+/B를 받을 정도로 높은 수준의 진학률과 학업성취도를 유지하는 명문사립학교입니다.

캠프 일정

2019년 7월 10일(수) ~ 2019년 7월 24일(수)
2019년 7월 24일(수) ~ 2019년 8월 7일(수)

Ardingly College



- Ardingly College는 런던에서 남쪽으로 60분 거리에 있으며 1858년 설립되었습니다.
- 만 2~18세의 580명 정도의 학생이 재학 중입니다.
- 졸업생의 약 5%가 Oxford와 Cambridge대학에 진학하고 그외로도 다수의 학생들이 영국의 Top 대학들로 진학하며, A level 성적 기준, Top 30 안에 들어가는 명문사립학교입니다.

캠프 일정

2019년 6월 30일(일) ~ 2019년 7월 14일(일)
2019년 7월 14일(일) ~ 2019년 7월 28일(일)
2019년 7월 28일(일) ~ 2019년 8월 10일(토)

Oxford Brookes University



- Oxford Brookes University는 1865년에 설립된 영국 Top 대학 중 하나로 Full-time수업을 듣는 재학생이 약 1400명입니다. 졸업생 취업률이 약 95%에 달하며 MBA 코스 세계 7위에 랭킹되어 있고, Land and Property Management, Building, Occupational Therapy, East and South East Asian Studies, Physiotherapy 등의 리서치 수준이 아주 높습니다.

캠프 일정

2019년 6월 30일(일) ~ 2019년 7월 14일(일)
2019년 7월 14일(일) ~ 2019년 7월 28일(일)
2019년 7월 28일(일) ~ 2019년 8월 10일(토)

New Hall School



- New Hall School은 런던에서 북동쪽으로 90분 거리에 있으며 1642년에 설립되었습니다. 만 3~18세의 1200명 정도의 학생이 재학 중입니다. 졸업생의 8%가 Oxford와 Cambridge 대학에 진학하고 그외로도 다수의 학생들이 영국의 Top 대학들로 진학하며, 약44%가 A level에서 A+/A를 받는 높은 진학률과 학업성취률을 보유하고 있습니다. A level 성적기준으로 Top클래스에 들어가는 명문사립학교입니다.

캠프 일정

2019년 7월 7일(일) ~ 2019년 7월 21일(일)
2019년 7월 21일(일) ~ 2019년 8월 4일(일)
2019년 8월 4일(일) ~ 2019년 8월 18일(일)

King's College London



- King's College London은 1829년 설립된 영국내 7위, 유럽내 9위, 전세계 대학중 Top 25에 랭킹되어 있는 명문 중의 명문입니다. 세계 150 개국의 26,000명 정도의 학생들이 재학 중입니다.
- 의대, 법대, 비즈니스를 비롯한 모든 학과들이 세계 최고 수준의 교수와 연구원들로 구성되어 있으며 뛰어난 교육적 업적과 연구, 학술 자료들로 전세계 교육을 선도하고 있습니다.

캠프 일정

2019년 6월 30일(일) ~ 2019년 7월 14일(일)
2019년 7월 14일(일) ~ 2019년 7월 28일(일)
2019년 7월 28일(일) ~ 2019년 8월 11일(일)

Frensham Heights School, Surrey

Set in over 100 acres of beautiful countryside, Frensham Heights School is a historic, independent boarding school within easy reach of London.



KEY FACTS

College address

- College Road, Ardingly, Haywards Heath RH17 6SQ, UK

Centre type

- Traditional boarding school

2019 Centre dates

- 8 Jul-19 Aug

Start dates

- 8 Jul, 15 Jul, 22 Jul, 29 Jul, 5 Aug, 12 Aug

Centre capacity

- 130 students

Age range

- 8 - 17 years

Residential centre (8-17)

- Single & twin, shared bathroom
- Larger rooms available
- Full board. All meals in the school dining room
- Packed lunches provided on excursion days

Homestay (12-17)

- Single or twin, shared bathroom
- Full board meals: daily breakfast and dinner with homestay; lunch provided at the residence Mon-Fri, and by homestays at the weekend

Exciting activities

- Fully supervised activities every afternoon and evening

Two excursions/week

- 1 full-day and 1 half-day. Excursions to London, Oxford, Brighton, Portsmouth, Windsor, Guildford (sample excursions selection)

English courses

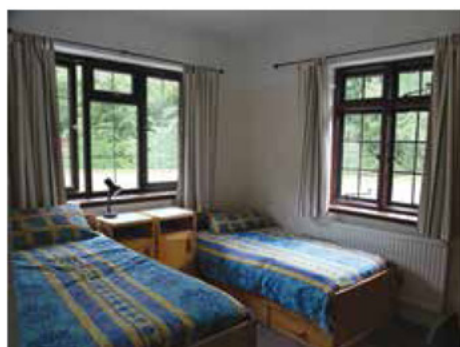
- Standard: 15 hours/week
- Intensive: 23 hours/week
- Learning materials
- First-day placement test
- End-of-course certificate
- Free internet access supervised by staff

Well-being and safety

- Staff: Student class supervision ratio 1:15
- Unaccompanied minor service
- Airport meet and greet
- Classes allocated according to age and level
- Teachers hold CELTA or equivalent qualifications
- Police background checks on all staff
- Mentor for individuals

	MORNING 09.00 - 12.30	AFTERNOON 14.00 - 17.30	EVENING 19.30 - 21.30
MONDAY	New student arrivals and activities at the college		'Getting to know you' activities
TUESDAY	General English	Intensive English or activities	Welcome disco
WEDNESDAY	General English	Intensive English or activities	Fashion show
THURSDAY	General English	Half-day trip: Windsor	Music quiz
FRIDAY	General English	Intensive English or activities	Karaoke night
SATURDAY	General English	Intensive English or activities	Barbecue and games
SUNDAY	Full day trip: London – sightseeing		Movie night

Sample residential timetable



Residential (8-17)

At Frensham, all students are accommodated in single and 2, 3 and 4-bedded rooms located in three boarding houses, each house having its own weekly laundry service.

- Attractive, modern rooms
- Spacious common rooms with TV and DVD
- Adjacent bathrooms, showers and toilets
- Weekly laundry service



Homestay (12-17)

Comfortable friendly homes with easy access to the college make this an excellent alternative to our residential option with students being taken and collected each day by their host family.



Facilities

- Theatre and social room
- Award-winning performing arts centre
- Bright & spacious classrooms equipped with audio and visual resources
- Sports hall (basketball, football and badminton)
- Outdoor playing fields (football, volleyball and team games)

Top 10 Nationalities 2018

01 Italy	06 Turkey
02 Spain	07 Germany
03 Portugal	08 Ukraine
04 Russia	09 Zimbabwe
05 France	10 Denmark

Distances

	Km
London Heathrow	49
London Gatwick	79
London Stansted	147
St. Pancras International	90



Cheltenham Ladies' College Gloucestershire

Close to the Cotswolds, Stratford-upon-Avon & Bath – ideal for studying English and exploring historic towns.



KEY FACTS

College address

- Bayshill Road, Cheltenham GL50 3EP, UK

Centre type

- Traditional boarding school

2019 Centre dates

- 10 Jul-21 Aug

Start dates

- 10 Jul, 17 Jul, 24 Jul, 31 Jul, 7 Aug, 14 Aug

Centre capacity

- 200 students

Age range

- Residential: 8 - 17 years
- Homestay: 12 - 17 years

Residential & homestay

- Single or twin rooms

Tasty and varied menu

- Full board. All meals in the school dining room (residential). Breakfast and dinner with family (homestay programme). Packed lunches provided on excursion days.

Exciting activities

- Fully supervised activities every afternoon and evening

Two excursions/week

- 1 full-day and 1 half-day. Excursions to London, Bristol, Oxford, Gloucester, Bourton-on-the-Water, Stratford-upon-Avon (sample excursions selection)

English courses

- Standard: 15 hours/week
- Intensive: 23 hours/week
- English Plus IELTS Preparation: 23 hours/week
- Learning materials
- First-day placement test
- End-of-course certificate
- Free internet access supervised by staff

Extra sport options

- Golf: 6 hours/week
- Horse Riding: 6 hours/weeks

Other options

- Family programme

Well-being and safety

- Staff: Student class supervision ratio 1:15
- Unaccompanied minor service
- Airport meet and greet
- Classes allocated according to age and level
- Teachers hold CELTA or equivalent qualifications
- Police background checks on all staff
- Mentor for individuals

	MORNING 09.00 - 12.30	AFTERNOON 14.00 - 17.30	EVENING 19.30 - 21.30
WEDNESDAY	New student arrivals and activities at the college		'Getting to know you' activities
THURSDAY	General English	Half-day trip: Stratford-upon-Avon	Disco
FRIDAY	General English	Intensive English or IELTS Preparation, sports options or activities	Barbecue and games
SATURDAY	General English	Intensive English, sports options or activities	Murder Mystery or Treasure Hunt
SUNDAY	Full-day trip: Oxford		Barbecue and games
MONDAY	General English	Intensive English or IELTS Preparation, sports options or activities	Quiz
TUESDAY	General English	Intensive English or IELTS Preparation, sports options or activities	Fashion show

Sample residential timetable



Residential & homestay

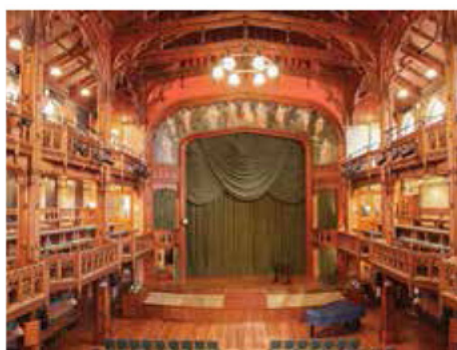
At Frensham, all students are at Cheltenham Ladies' College we offer both residential and homestay accommodation.

The residential option: comfortable houses with mainly single and twin-bedded rooms with wash basin, adjacent bathroom, shower and toilet facilities, common room areas with TV.

The homestay option: ideal for students who prefer a comfortable, friendly home environment with native speakers. Students are taken to and collected from school by their host families.

Top 10 Nationalities 2018

01 Italy	06 Hong Kong
02 China	07 Ukraine
03 Spain	08 South Korea
04 Germany	09 Kazakhstan
05 Russia	10 Japan



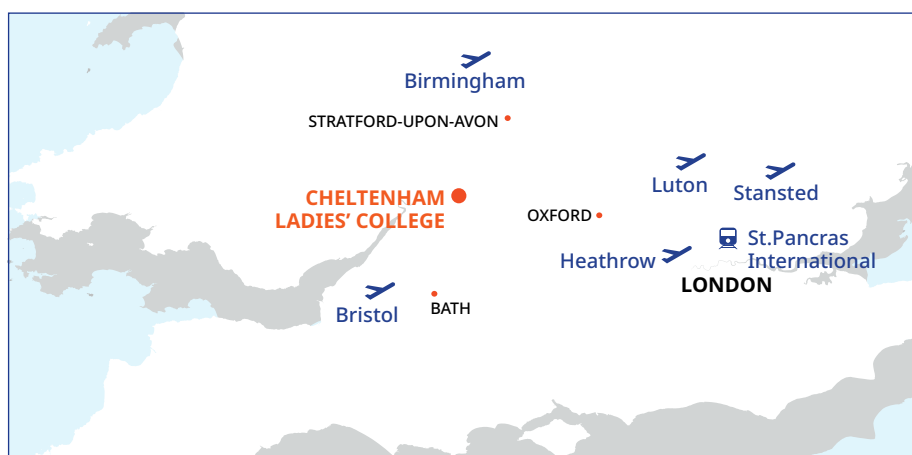
Sports & leisure facilities

- Brand new performing arts centre
- Sports centre & playing fields
- 25m swimming pool
- Theatre & disco hall
- Internet access
- Group Leader common room

Area of Outstanding National Importance

Cheltenham is located within a conservation area of outstanding national importance. The town is famous for its Regency architecture and is said to be "the most complete Regency town in England". The town is also well-known for its award-winning gardens, stylish shops and restaurants, and its festivals of horse racing, music and literature. The college campus is a short 10 minute walk from the centre of Cheltenham itself, making it a very convenient location for our students.

Distances	Km
London Heathrow	122
London Gatwick	164
St. Pancras International	142
Birmingham International	40
Bristol Airport	61





KEY FACTS

College address

- Bath Road, Stonehouse GL10 2JQ, UK

Centre type

- Traditional boarding school

2019 Centre dates

- 11 Jul - 15 Aug

Start dates

- 11 Jul, 18 Jul, 25 Jul, 1 Aug, 8 Aug

Centre capacity

- 200 students

Age range

- 8 - 17 years

Residential centre (8-17)

- Single & twin (some en-suite)
- Larger rooms available
- Full board. All meals in the school dining room
- Packed lunches provided on excursion days

Homestay (12-17)

- Single or twin, shared bathroom
- Full board meals: daily breakfast and dinner with homestay; lunch provided at the residence Mon-Fri, and by homestays at the weekend

Exciting activities

- Fully supervised activities every afternoon and evening

Two excursions/week

- 1 full-day and 1 half-day to London, Oxford, Bristol, Bath, Gloucester, Cheltenham
- (sample excursions selection)

English courses

- Standard: 15 hours/week
- Intensive: 23 hours/week
- Learning materials
- First-day placement test
- End-of-course certificate

Afternoon options

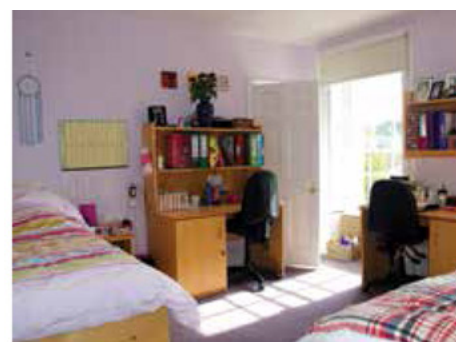
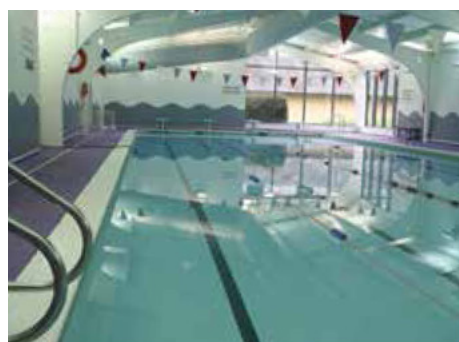
- Tennis: 6 hours/week
- Horse Riding: 6 hours/week

Well-being and safety

- Staff: Student class supervision ratio 1:15
- Unaccompanied minor service
- Airport meet and greet
- Classes allocated according to age and level
- Teachers hold CELTA or equivalent qualifications
- Police background checks on all staff
- Mentor for individuals

	MORNING 09.00 - 12.30	AFTERNOON 14.00 - 17.30	EVENING 19.30 - 21.30
WEDNESDAY	New student arrivals and activities at the college		'Getting to know you' activities
THURSDAY	General English	Intensive English, afternoon options or activities	Disco
FRIDAY	General English	Half-day trip: Bath	International evening
SATURDAY	General English	Intensive English or activities	Murder Mystery or Treasure Hunt
SUNDAY	Full-day trip: Oxford – sightseeing		Games
MONDAY	General English	Intensive English or IELTS Preparation, sports options or activities	Quiz
TUESDAY	General English	Intensive English or IELTS Preparation, sports options or activities	Fashion show

Sample residential timetable



Sports & leisure facilities

- Indoor heated swimming pool
- Tennis courts
- Indoor sports centre & playing fields
- Theatre & disco hall
- Internet access
- Group Leader common room

Residential (8-17) & Homestay (12-17)

The residential option boarding houses at the senior school are of a high standard and consist of single and twin rooms.

- Attractive, modern rooms
- Fully equipped common rooms
- Adjacent bathrooms, showers and toilets
- En-suite rooms for an additional fee of £100 per week

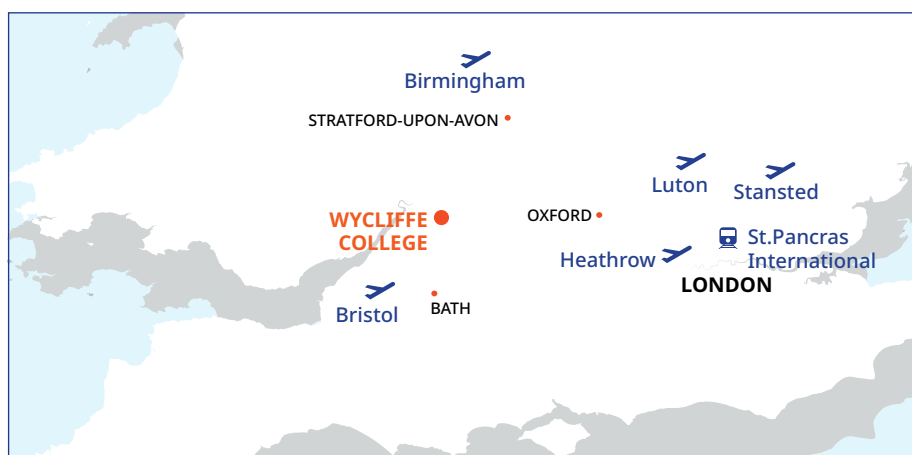
The homestay option ideal for students who wish to live in a home environment and experience the culture first hand. Comfortable and friendly homes within easy access to college make this an excellent alternative to our residential option with students being taken and collected each day by their host family.

Top 10 Nationalities 2018

01 Spain	06 Brazil
02 Italy	07 France
03 China	08 Ukraine
04 Russia	09 Turkey
05 Argentina	10 Poland

Distances Km

London Heathrow	152
London Gatwick	211
London Stansted	246
Birmingham International	96
Bristol Airport	80



Ardingly College West Sussex

The best of both worlds – an ideal setting for learning English, while having fun in the beautiful countryside.



KEY FACTS

College address

- College Road, Ardingly, Haywards Heath RH17 6SQ, UK

Centre type

- Traditional boarding school

2019 Centre dates

- 30 Jun-10 Aug

Start dates

- 30 Jun, 7 Jul, 14 Jul, 21 Jul, 28 Jul, 4 Aug

Centre capacity

- 175 students

Age range

- 8 - 17 years

Residential centre (8-17)

- Single & twin, shared bathroom
- Larger rooms available
- Full board. All meals in the school dining room
- Packed lunches provided on excursion days

Homestay (12-17)

- Single or twin, shared bathroom
- Full board meals: daily breakfast and dinner with homestay; lunch provided at the residence Mon-Fri, and by homestays at the weekend

Exciting activities

- Fully supervised activities every afternoon and evening (homestay 2 evenings per week)

Two excursions/week

- 1 full-day and 1 half-day. Excursions to Brighton, London, Oxford, Cambridge (sample excursions selection)

English courses

- Standard: 15 hours/week
- Intensive: 23 hours/week
- Learning materials
- First-day placement test
- End-of-course certificate
- Free internet access supervised by staff

Extra sport options

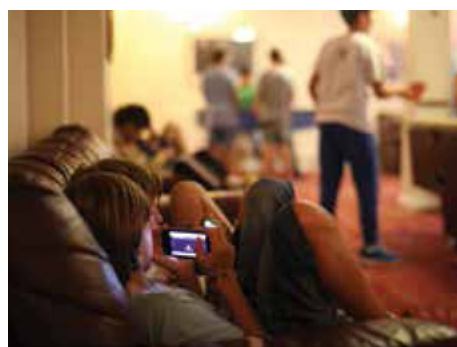
- Tennis: 6 hours/week
- Watersports: 6 hours/week

Well-being and safety

- Staff: Student class supervision ratio 1:15
- Unaccompanied minor service
- Airport meet and greet
- Classes allocated according to age and level
- Teachers hold CELTA or equivalent qualifications
- Police background checks
- Mentor for individuals

	MORNING 09.00 - 12.30	AFTERNOON 14.00 - 17.30	EVENING 19.30 - 21.30
SUNDAY	New student arrivals and activities at the college		'Getting to know you' activities
MONDAY	General English	Intensive English or activities	Welcome disco
TUESDAY	General English	Intensive English, sports options or activities	Fashion show
WEDNESDAY	General English	Intensive English, sports options or activities	Barbecue and games
THURSDAY	General English	Half-day trip: Brighton	Karaoke night
FRIDAY	General English	Intensive English, sports options or activities	Casino night
SATURDAY	Full-day trip: London with sightseeing		Barbecue and games

Sample residential timetable

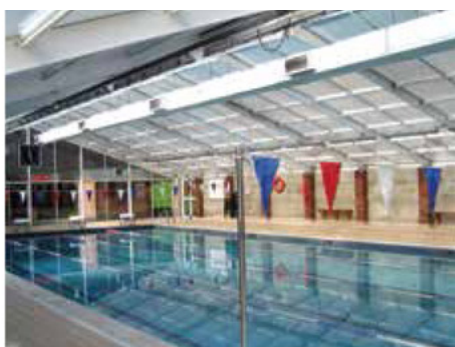


Accommodation & welfare

Residential: a number of comfortable houses with mainly single and twin-bedded rooms.

- Attractive, modern rooms
- Common rooms with TV and DVD
- Adjacent showers and toilets

Homestay: comfortable friendly homes with easy access to the college with students being taken and collected each day by their host family.



Sports & leisure facilities

Superb facilities include a modern indoor heated swimming pool with a resident lifeguard, and options to suit everyone.

- 18 tennis courts
- Indoor basketball, football, badminton
- Outdoor football, volleyball, team games
- Theatre and disco hall



English Plus Sports

For an extra fee, students can complement their English lessons with 6 hours of tennis or watersports per week.

- Fantastic tennis facilities
- Magnificent reservoir located within the school campus
- Afternoon lessons delivered by qualified instructors

Top 10 Nationalities 2018

01 Russia	06 Hong Kong
02 Spain	07 Turkey
03 France	08 Italy
04 Argentina	09 Switzerland
05 Germany	10 Ukraine

Distances

	Km
London	60
Brighton	19
Heathrow Airport	58
Gatwick Airport	15





KEY FACTS

College address

- Oxford Brookes University, Marston Rd. Site, Jack Straws Lane, Marston OX3 0FL, UK
- Residence address: Clive Booth Hall, John Garne Way, Marston, Oxford OX3 0FN, UK

Centre type

- University Campus

2019 Centre dates

- 30 June - 10 Aug

Start dates

- 30 Jun, 7 Jul, 14 Jul, 21 Jul, 28 Jul, 4 Aug

Centre capacity

- 120 students

Age range

- Groups: 12 - 17 years
- Individuals: 14 - 17 years

Residential centre

- Single en-suite rooms

Tasty and varied menu

- Full board. All meals in the school dining room. Packed lunches provided on excursion days.

Exciting activities

- Fully supervised activities every afternoon and evening

Two excursions/week

- 1 full-day and 1 half-day.
Excursions to London, Bath, Bristol, Windsor, Witney, Abingdon by coach, plus 3 trips into Oxford.
(sample excursions selection)

English courses

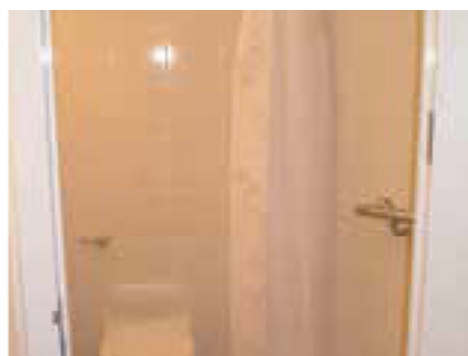
- Standard General English: 15 hours/week
- Intensive General English: 23 hours/week
- Learning materials
- First-day placement test
- End-of-course certificate
- Free internet access supervised by staff

Well-being and safety

- Staff: Student class supervision ratio 1:15
- Unaccompanied minor service
- Airport meet and greet
- Classes allocated according to age and level
- Teachers hold CELTA or equivalent qualifications
- Police background checks on all staff
- Mentor for individuals

		MORNING 09.00 - 12.30		AFTERNOON 14.00 - 17.30		EVENING 19.30 - 21.30		
SUNDAY	Breakfast 07.00-08.00	New student arrivals and activities at the college				Dinner 18.00-19.00	'Getting to know you' activities	
MONDAY		General English		Lunch 12.30-13.30	Half-day trip: Oxford		International evening	
TUESDAY		General English			Intensive English or visit to Oxford		Oxford by night	
WEDNESDAY		General English			Intensive English or activities		Disco	
THURSDAY		General English			Intensive English or Oxford Museum Visit		Murder mystery	
FRIDAY		General English			Oxford City Centre video making		Fashion show	
SATURDAY		Full-day trip: London					Film night	

Sample residential timetable



Accommodation & welfare

Our students are accommodated in en-suite rooms at Clive Booth Halls, a modern residence surrounded by parks and located a short walk away from the main campus.

Rooms are arranged in university-style flats with 5 or 6 rooms in each flat. All accommodation has spacious common rooms and kitchen areas where students can relax with friends.

Sports & educational facilities

- Disco, dancing, talent shows and other evening activities are held at the main campus Sports Hall bar
- Excellent modern sports centre includes a large sports hall and adjacent parks
- Films are shown in the lecture theatres

Top 10 Nationalities 2018

01 Italy	06 Switzerland
02 France	07 Argentina
03 Russia	08 Germany
04 Brazil	09 Oman
05 China	10 Spain

Distances

	Km
London	90
London Heathrow	75
London Gatwick	130
London Stansted	145





KEY FACTS

College address

- The Avenue, Boreham, Chelmsford
Essex CM3 3HS, UK

Centre type

- Traditional boarding school

2019 Centre dates

- 7 Jul - 11 Aug

Start dates

- 7 Jul, 14 Jul, 21 Jul, 28 Jul, 4 Aug

Centre capacity

- 120 students

Age range

- 8 - 17 years

Residential centre (8-17)

- Full board, single & twin, shared bathroom
- Larger rooms available
- Full board. All meals in the school dining room
- Packed lunches provided on excursion days

Homestay (12-17)

- Full board, single or twin rooms, shared bathroom
- Full board meals: daily breakfast and dinner with homestay; lunch provided at the residence Mon-Fri, and by homestays at the weekend

Exciting activities

- Fully supervised activities every afternoon and evening

Two excursions/week

- 1 full-day and 1 half-day. Excursions to London, Cambridge, Canterbury, Colchester, Southend, Clacton-on-Sea. (sample excursions selection)

English courses

- Standard General English: 15 hours/week
- Intensive General English: 23 hours/week
- English Plus Horse Riding
 - Learning materials
 - First-day placement test
 - End-of-course certificate
 - Free internet access supervised by staff

Afternoon options

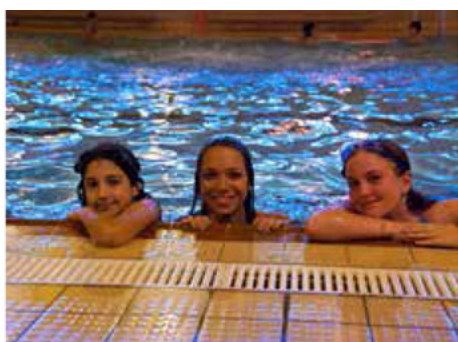
- Horse Riding: 6 hours/week

Well-being and safety

- Staff: Student class supervision ratio 1:15
- Unaccompanied minor service
- Airport meet and greet
- Classes allocated according to age and level
- Teachers hold CELTA or equivalent qualifications
- Police background checks on all staff
- Mentor for individuals
- 24 hour on site security

		MORNING 09.00 - 12.30		AFTERNOON 14.00 - 17.30		EVENING 19.30 - 21.30		
SUNDAY	Breakfast 07.30-08.30	New student arrivals or activities for exiting students				Dinner 18.00-19.00	'Getting to know you' activities	
MONDAY		General English		Lunch 12.30-13.30	Intensive English or activities		International evening	
TUESDAY		General English			Intensive English or activities		Fashion show	
WEDNESDAY		General English			Intensive English or activities		Casino night	
THURSDAY		General English			Half day trip: Colchester		Murder mystery	
FRIDAY		General English			Intensive English or activities		Disco	
SATURDAY		Full-day trip: Cambridge – sightseeing					Film Night	

Sample residential timetable



Sports & leisure facilities

- Indoor heated swimming pool
- 10 tennis courts
- National standard athletics track
- Astroturf pitch
- Indoor sports centre
- Outside playing fields
- Theatre and disco hall
- Internet access
- Group leader common room

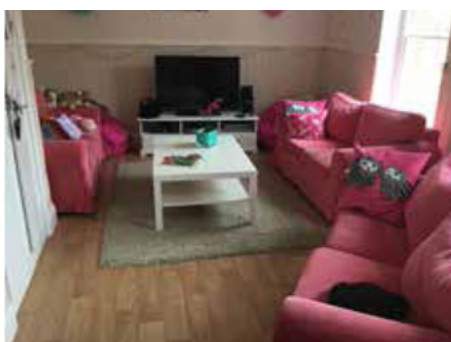
The perfect spot for town or countryside

Located only 90 minutes from London, and affording the luxury of having London Stansted airport only 25 minutes away, the school is easily accessible. Other nearby airports of London Gatwick and London Heathrow make New Hall School an attractive and convenient location for overseas visitors.

Distances

Km

London	66
Cambridge	69
Heathrow Airport	107
Stansted Airport	29
Gatwick Airport	94



Accommodation & welfare

New Hall has three comfortable houses accommodating students in single, twin and multi-bedded rooms with a sink in each room, alongside shared bathroom facilities on every floor. The three houses are equipped with a common room with TV, DVD, sofas and a games room, providing a great atmosphere for students to relax, practise their English skills and get to know each other.



Homestay (12-17)

The homestay option is ideal for students who wish to live in a home environment and experience the culture first hand. Comfortable friendly homes with easy access to the college make this an excellent alternative to our residential option with students being taken and collected each day by their host family.



King's College, London Bridge Central London

Located in the heart of London at one of the world's Top 25 university campuses and surrounded by iconic landmarks.



KEY FACTS

College address

- Guy's Campus, King's College London, London SE1 1UL, UK • Residence address: Clive
- Residence address: 165 Great Dover Street, London SE1 4XA, UK

Centre type

- University Campus (split site)

2019 Centre dates

- 30 Jun-11 Aug

Start dates

- 30 Jun, 7 Jul, 14 Jul, 21 Jul, 28 Jul, 4 Aug

Centre capacity

- 300 students

Age range

- Groups: 12 - 17 years
 - Individuals: 14 - 17 years
- (Please note that students up to the age of 19 years old may be present on site in closed groups on selected dates.)

Residential centre

- Single en-suite rooms
- Towels provided and bed linen changed once a week
- Damage deposit: £50

Tasty and varied menu

- Full board. All meals in the school dining room (packed lunches provided at weekends and on excursion days)

Exciting activities

- Fully supervised activities every afternoon and evening

Two excursions/week

- 1 full-day excursion to Brighton, Oxford, Cambridge (sample excursions selection)

English courses

- General English plus exploring London: 15 hours/week plus 5 half-day excursions in and around the capital city
- Learning materials
- First-day placement test
- End-of-course certificate

Well-being and safety

- Staff: Student class supervision ratio 1:15
- Unaccompanied minor service
- Airport meet and greet
- Classes allocated according to age and level
- Teachers hold CELTA or equivalent qualifications
- Police background checks on all staff
- Mentor for individuals

	MORNING 09.00 - 12.30	AFTERNOON 14.00 - 17.30	EVENING 19.30 - 21.30
SUNDAY	New student arrivals or activities for exiting students		Welcome Party
MONDAY	General English	Local orientation	Thames by night
TUESDAY	General English	Trafalgar Square, Westminster and The Strand	Disco and Karaoke
WEDNESDAY	General English	Natural History Museum	Namco Funscape (Entertainment Centre)
THURSDAY	General English	Camden Market	Piccadilly by night
FRIDAY	General English	Victoria and Albert Museum	Visit to Tate Modern
SATURDAY	Full-day trip: Cambridge – sightseeing		Film Night

Sample residential timetable



Course Objectives

- To build effective communicative competence
- To improve speaking and listening skills
- To provide opportunities for collaborative and team-based learning
- To improve learner independence and confidence in the English language

Facilities

- Canteen
- Outdoor space
- Modern classrooms with interactive white boards
- Wi-Fi available in specific areas
- Prayer room available on request

Accommodation & welfare

You will stay in single en-suite bedrooms in a well-maintained student residence provided by King's College. The residence is located only 15 minutes from the campus on foot, and includes 24 hour security, laundry facilities, and a dedicated Young Learner team on site.

Top 10 Nationalities 2018

01 Italy	06 Hong Kong
02 China	07 Israel
03 Portugal	08 Taiwan
04 Turkey	09 Mexico
05 France	10 Spain

Distances

Km

Brighton	90
Heathrow Airport	30
Gatwick Airport	45
Stansted Airport	120

